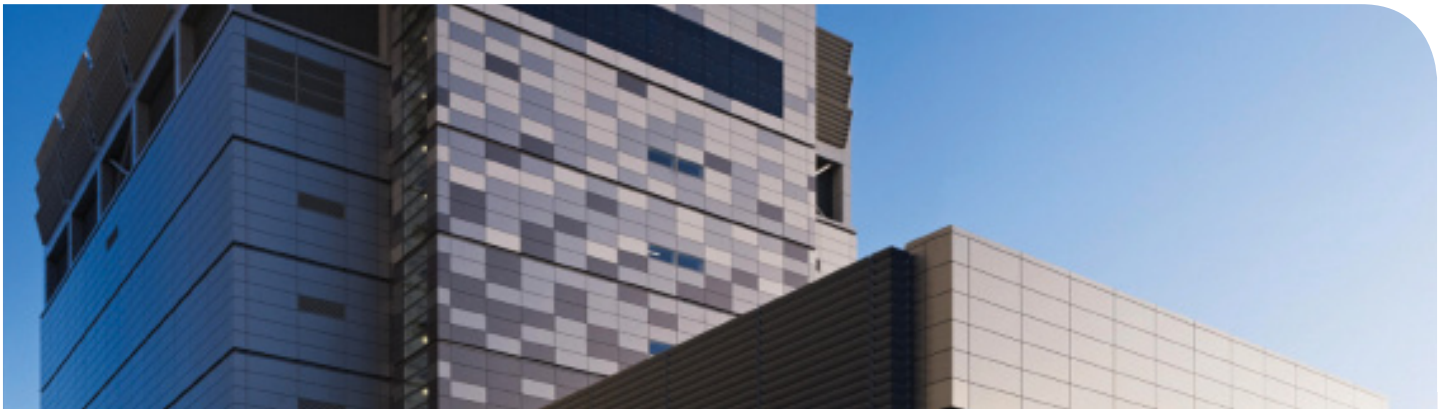


Telehouse West

Location: Coriander Avenue, London, E14 2AA, United Kingdom



Telehouse West

Opened in April 2010, this flagship data centre is an additional home to the London Internet Exchange hosting a brand new peering switch platform designed for powerful low-latent connectivity. With approximately 5,000m² of colocation space, Telehouse provides an ideal environment for primary and disaster recovery/backup sites. Already hosting leading financial institutions, media/content and cloud providers, Telehouse West is designed for the data-critical corporation.

A nine storey data centre with 19,000 m² made up of technical and customer space. The new facility offers a 'localised data centre environment' for each of the five tenant floors; consisting of rackspace and individual power/cooling provision, resulting in lower risk of failure to service. Each floor (consisting of a concrete subfloor) is capable of loading 1.5 tonnes per sqm, designed for heavy plant equipment.

Colocation & Hosting:

Telehouse can provide:

- Shared Facilities Management (SFM), Dedicated Facilities Management (DFM) and high density rack hosting up to 10kW
- Fully managed half rack service with best of breed hardware

- Hardware supply and maintenance service through gold partnerships with leading vendors

Power:

- Average power per rack - 4kW
- Four redundant HV power systems, from separate grids to each building on the Docklands site
- 8 x 2.5MVA 11kV Generators with N+1 redundant standby generators with a minimum of 24 hours autonomy at full capacity
- 2 (N+1) redundant UPS floor by floor
- Redundant A & B power feeds to customer equipment
- On-site primary substation with total capacity of 50MVA with cooling and two

132kV power lines directly connected to the National Grid with two transformers providing N+N redundancy

Environment and Air Conditioning:

- 6 x 2.7MW chillers N+2 configuration
- Room Air Conditioning Units (RACUs) to provide down-flow chilled water system at N+25%
- RACU with banded floor area and water leakage detection and monitoring
- Hot aisle/cold aisle zone design
- 900mm raised floor design with airflow space to provide the most efficient cooling
- Free cooling operation in winter





- Maximum external ambient temperature of 35 degrees Celsius dry bulb
- The in-room units will provide full function, closed control air conditioning, with cooling, humidity and de-humidification control

Connectivity:

The facility continues the availability of wide connectivity to major telecoms and network service providers and offers customers connectivity to any telecom presence in the Telehouse data centres.

- Connectivity to 2 meet me rooms offering true diversity directly connectable from each tenant floor
- Hosts the London Internet Exchange peering platform allowing low-latency connectivity
- In 2012, LINX doubled the bandwidth capacity to 9.6TB at Telehouse

Fire Detection & Suppression:

- Data centre areas are fitted with a fully addressable two stage fire detection system that monitors both under-floor and the room itself

- Detectors with 50% mix of optical and ionisation are split across 2 separate zonal-loops, to meet BS 5839, 6266, 5445 and 5588
- Very early smoke detection alarms (VESDA) installed throughout the facility
- Dry sprinkler fire detection system to meet BS 5306, 3115 and with LFEPA approval. Dry sprinkler is the main fire suppression method employed
- The systems are designed to minimise any possible customer disruption and to ensure that any minor problems remain localised

Security System:

- Independent client card identification access system
- Secure & monitored single-person point of entry, physically guarded 24/7 and integrated digital video camera surveillance
- Proximity card access is provided from the main data centre building and is issued to provide access only to authorised facilities management suites
- Strict security processes are in place

to ensure delivery and loading of goods are secure

- CCTV coverage for the perimeter, common areas and facilities management suites

Environment:

- The Telehouse London Docklands site is powered by 100% renewable energy
- Telehouse West has a built in waste heat exchange system facility to reuse lost heat to distribute to third parties and also pre-cool the chilled water, thus reducing both chiller and dry air cooler power requirements

Certifications:

- ISO 9001:2008 Quality Management Standard
- ISO/IEC 27001:2005 Information Security Management
- PCI – DSS (Payment Card Industry – Data Security Standard) Attestation
- BS 25999-2:2007 Business Continuity Management
- ISO 14001 Environmental Standard and the Carbon Trust Standard

Home to your global ICT solutions

Telehouse now offer full end-to-end ICT solutions from design to implementation such as IP connectivity, system integration, LAN and software installation, system monitoring and virtual servers as well as premium data centres.

Speak to a member of our sales team regarding your requirements and we will propose the right solution for you. Telehouse can also assist in improving the efficiency of your existing IT infrastructure and the management of a comprehensive IT migration plan.

Contact Our Sales Team:

Telehouse Deutschland GmbH, Kleyerstrasse 79-89, 60326 Frankfurt am Main, Germany

T: +49 (0)69 50 95 99 0

E: sales@de.telehouse.net

W: www.telehouse.net/de

